



S & S TOOLING

S & S Tooling

Timely Delivery | Functional Brilliance | Best quality

COMPANY PROFILE

www.sstoolingin.com



ABOUT US



S & S TOOLING

Founded in 2005, S & S TOOLING is an organization established to provide high end precision tooling solutions. We are a young organization with high energy levels and a global mind set.

With 18+ years of industry experience, we specialize and pioneer in product design, analysis, CAD-CAM, tool development and processing techniques. Our technical knowledge and professional approach make us your ideal choice.

WHAT WE BELIEVE IN



S & S TOOLING



VISION

To become customer's first choice for product development solutions which are recognized for Quality, Timely Delivery and Superior customer satisfaction.



MISSION

To provide high quality product development solutions to our customers.

Involvement of our team in an efficient manner to achieve our goal.



QUALITY POLICY

To achieve the customer's expectations for quality and deadlines by accepting individual responsibility for quality and time.

Our motto is to "Achieve, First Time Right"

OUR TEAM



S & S TOOLING



Led by Mr. Santoshkumar Patil, we are a team of qualified and experienced designers, programmers and skilled operators striving to provide the best product and customer experience.

OUR VALUABLE CLIENTS



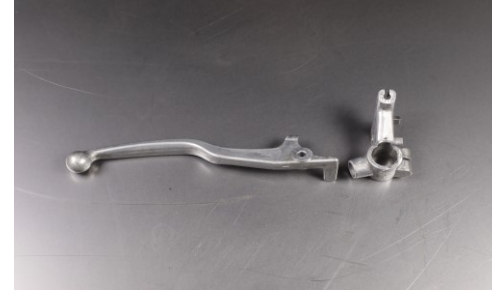
PRODUCTS AND SERVICES



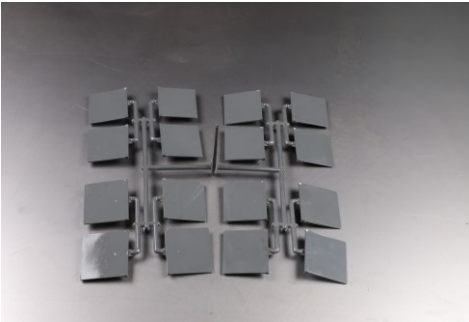
S&S TOOLING



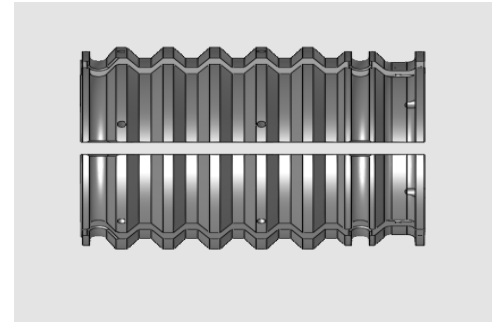
RUBBER MOULDS



DIE CASTING DIES



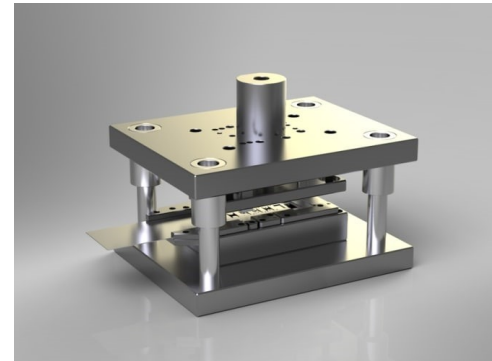
PLASTIC MOULDS



PRECISION MACHINED
COMPONENTS



MOULD BASE



SHEET METAL DIES

CAD and CAM



S&S TOOLING



SOFTWARES USED:

- NX12
- CIMATRON CAD
- CIMATRON CAM
- WORK NC CAM
- ZWCAD
- EDGE CAM

OUR PROCESS:

- MOULD DESIGN
- CAM PROCESSING
- PRESS TOOL DESIGN
- CAD DRAWING
- MOULD CORRECTION
- MOULD PROCESS PLANNING



MACHINING FACILITIES - VMC



S & S TOOLING



MODEL NO	QUANTITY	CAPACITY	MAKE
DOUBLE COLUMN VMC KAFO BMC 4127	1	Load capacity : 18 Tons Size: X -4100, Y-2700, Z-1100	TAIWAN
BFW DOUBLE COLUMN VIRAT 1530	1	Load capacity: 8 ton Size: X -3000, Y-1700, Z-1000	INDIA
BFW DOUBLE COLUMN VIRAT 1020	1	Load capacity: 4 ton Size: X -2000, Y-1200, Z-800	INDIA
MANFORD STM VL1800 VMC MACHINE	1	Load capacity : 1.8 Ton Size: X -1300, Y-720, Z-720	TAIWAN
BFW BMV 60+ VMC MACHINE WITH 4 th AXIS	1	Load capacity : 1ton Size: X -1000, Y-600, Z-610	INDIA
BFW BMV 60+ VMC MACHINE	2	Load capacity : 1ton Size: X -1000, Y-600, Z-610	INDIA
KAFO 7A VMC MACHINE	1	Load capacity : 800 kg Size: X -800, Y-500, Z-520	TAIWAN
FEMCO FIRST V700 VMC MACHINE	1	Load capacity : 400 kg Size: X -700, Y-400, Z-700	TAIWAN

MACHINING FACILITIES - EDM



S&S TOOLING



MODEL NO	QUANTITY	CAPACITY	MAKE
SPARKONIX TWIN HEAD EDM (with X and Y axes side sparking)	1	3000*1500*700 Electrode weight 150KG, Job weight –8000KG	INDIA
SPARKONIX (ZNC) 50 A EDM MACHINE	1	1000*600*250	INDIA
SPARKONIX EDM MACHINE	1	800*500*250	INDIA
SPARKONIX 35 A EDM MACHINE	1	350*200*220	INDIA

MACHINING FACILITIES – CNC TURNING



LL 20T L 5 CNC LATHE MACHINE

TOOLROOM MACHINE FACILITIES



S&S TOOLING



LATHE MACHINE 5'



RADIAL DRILLING MACHINE



**HANSEAT BLOHOM
SURFACE GRINDING MACHINE**

TOOLROOM MACHINE FACILITIES



S & S TOOLING



**M1TR MILLING MACHINE
MADE IN TAIWAN**



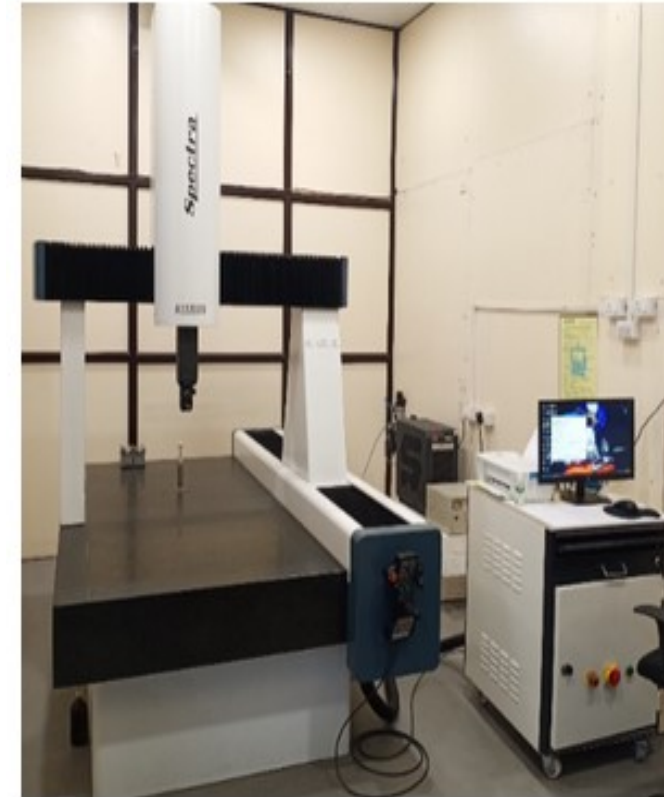
HURON MILLING MACHINE

INSPECTION FACILITIES



S & S TOOLING

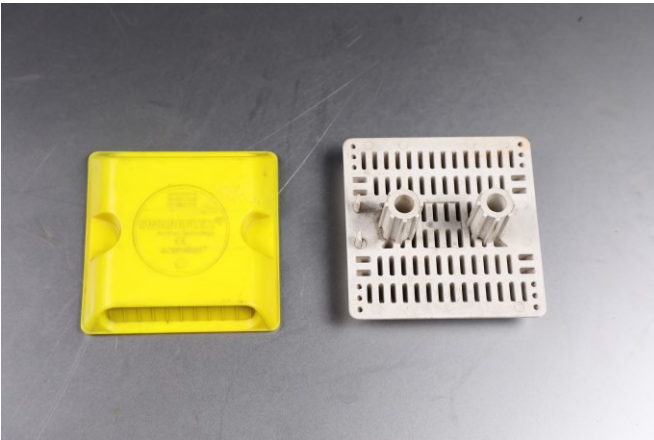
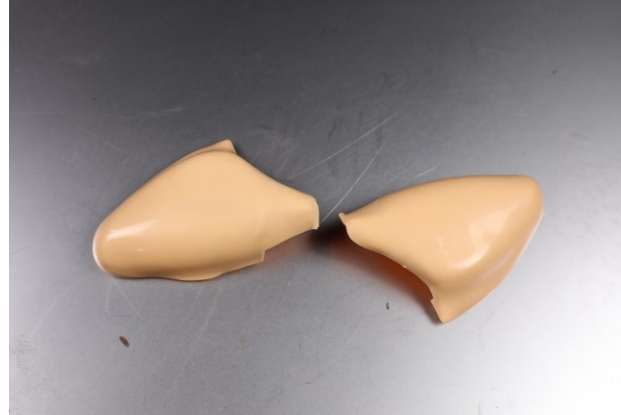
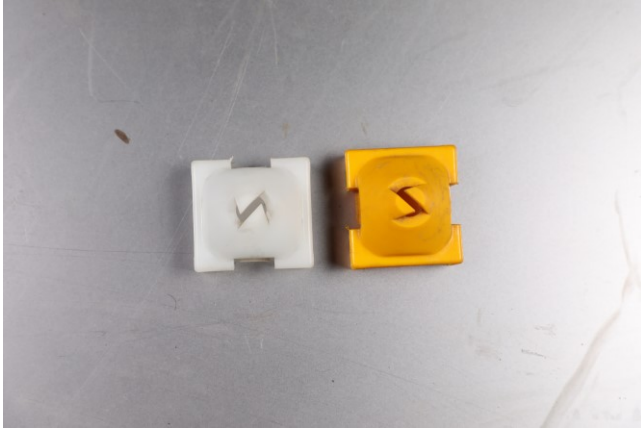
- SURFACE PLATE
- DIGITAL HEIGHT GUAGE
- DIGITAL VERNIER – Height 300
- ANALOG MICROMETER - 25 to 150
- ANALOG DIAL VERNIER – 300
- DIGITAL DIAL VERNIER – 150
- SLIP GUAGE BOX
- PIN GUAGE BOX
- VERNIR CALIPER
- PUPPY DIAL
- BORE GUAGE – 18 to 150 min and max
- PLUNGER LEVER – 10 micron
- CMM FACILITY AT SISTER CONCERN



OUR WORK



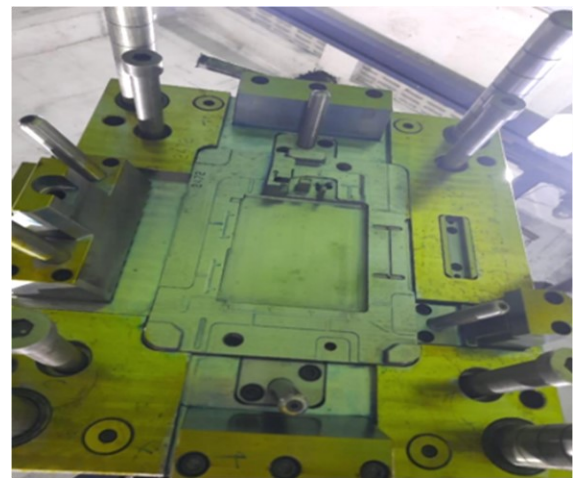
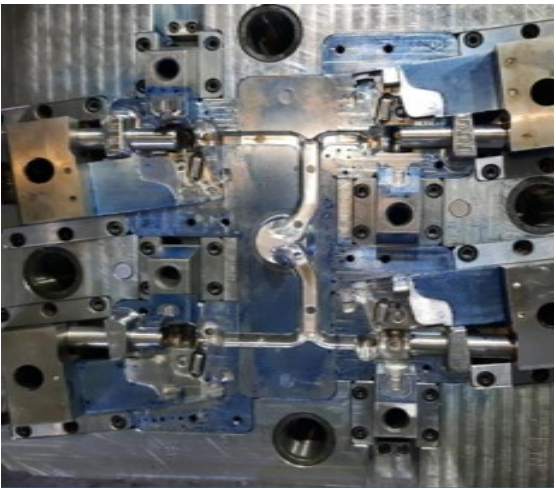
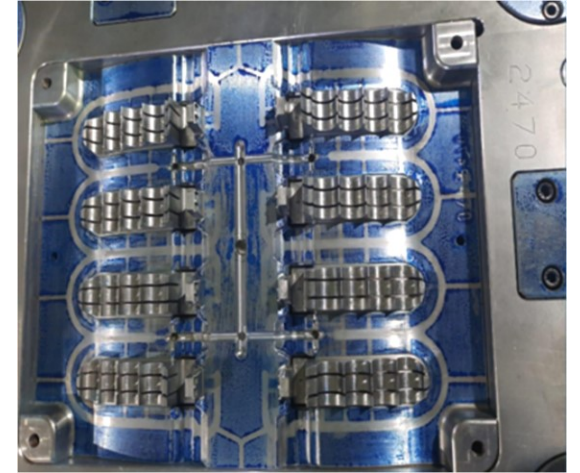
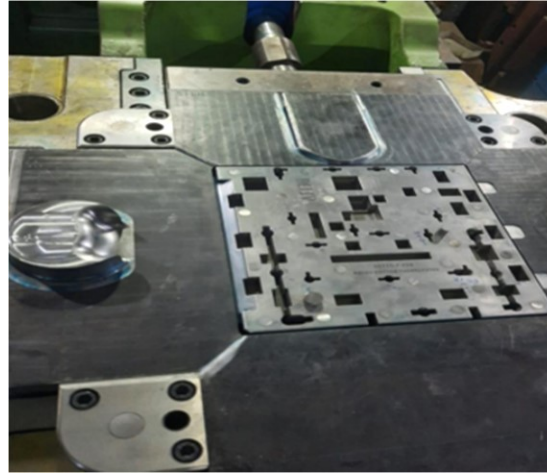
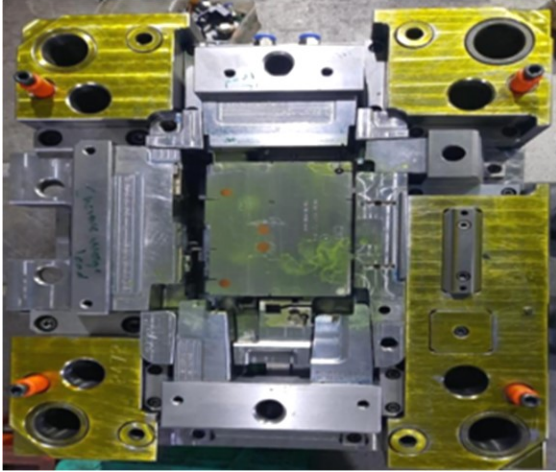
S&S TOOLING



OUR WORK



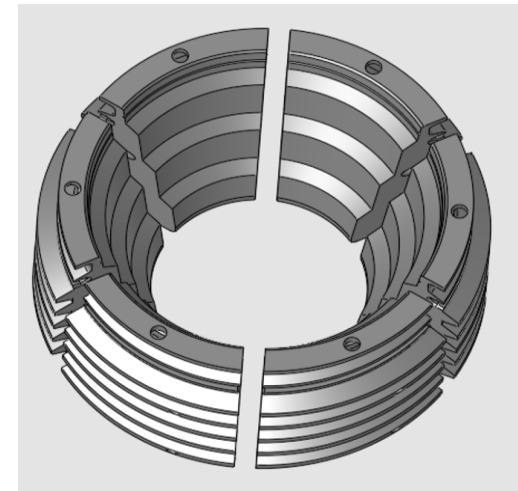
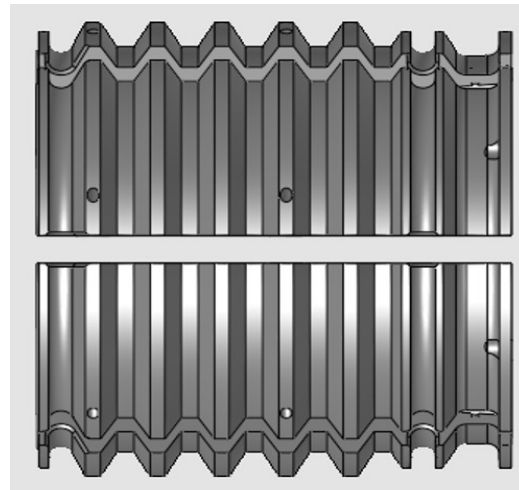
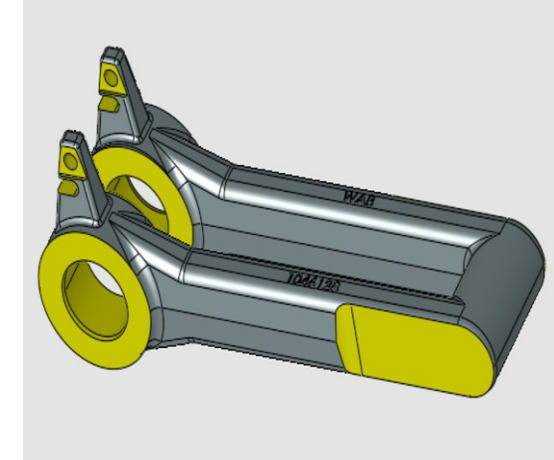
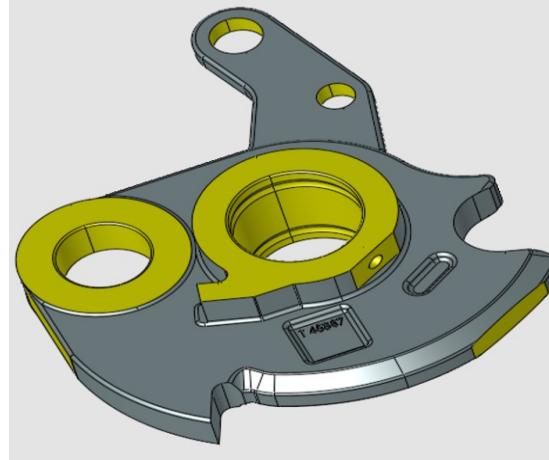
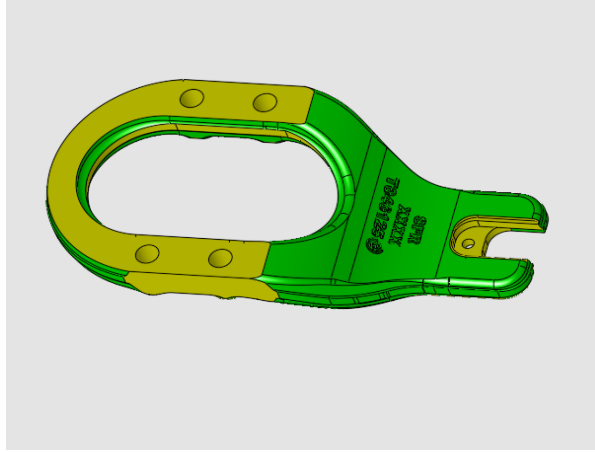
S&S TOOLING



MACHINED COMPONENTS



S&S TOOLING



CONNECT WITH US



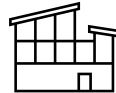
Email

mail@sstoolingin.com



Website

www.sstoolingin.com



Address

J-192/2, J-Block, MIDC, Bhosari, Pune - 411026



Call us

+91-823-704-1147



Thank you!

Feel free to approach us if you have any questions.